

# 720R™

- HIGH-SPEED CAPABILITIES
- EXCEPTIONAL TRACTION
- BUILT TO LAST



M+S

### THE DRIVE TIRE FOR FAST-PACED BUSINESS

The 720R is an N-Speed rated 19.5" drive tire built specifically for pickup trucks and last mile delivery operations. Its deep-tread design is built to last and provides year-round traction for outstanding maneuverability in urban environments.



#### EXCEPTIONAL TRACTION

##### WIDE LATERAL GROOVES

Run diagonally across the center rib for improved wet and snow traction.

##### DEEP OPEN SHOULDER LUG GROOVES

Provide high traction and fight irregular wear.

##### SERPENTINE GROOVES

Deep circumferential grooves efficiently evacuate water to provide confident wet weather traction throughout the life of the original tread.

##### DEEP ORIGINAL TREAD DEPTH

An 18/32" tread depth provides aggressive traction and longer wear without sacrificing fuel efficiency.

#### BUILT TO LAST

##### SIDEWALL PROTECTION

Reduces damage caused by curbing and scrubbing in typical urban operations.

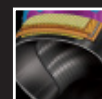
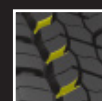
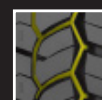
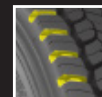
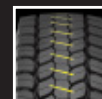
##### FUNNEL-SHAPED STEP GROOVES

Prevent stones and debris from reaching the bottom of the groove where casing damage can occur.

#### HIGH-SPEED CAPABILITIES

##### ALL NEW CASING DESIGN

N-Speed rated, allowing for speeds up to 140 KPH.



TIRE SIZE	PART #	PLY RATING	TIRE WEIGHT (lbs)	RIM WIDTHS (inches)		INFLATED DIMENSIONS (inches)		TREAD DEPTH 1/32"	LOADED DIMENSIONS (inches)			MAX LOAD (lbs) @ MAX PSI		MAX SPEED (KPH)
				PREF	ALT	OVERALL WIDTH	OVERALL DIAMETER		STATIC RADIUS	REV / MILE	OVERALL WIDTH	SINGLE	DUAL	
225/70R19.5	120172010	14G	64.8	6.75	6.00	8.9	31.9	18	14.9	654	8.9	3970 @ 110	3750 @ 110	140

Yokohama tires are subject to an ongoing development process. Yokohama Tire (Canada) Inc. reserves the right to change product specifications at any time without notice or obligation.



#### YOKOHAMA EMERGENCY SERVICE - 1.800.282.1570

With a multitude of services available, Yokohama is saying "YES" to your fleets' emergency roadside tire needs around the clock and throughout Canada and United States.